

Last Updated: 2011.10.27

NEXIO HID Touch-screen User Guide

[note] The information in this manual written based on Windows 7 and images used in this manual may differ from the actual image.

CONTENTS

1. Introduction	4
1.1 Touch-screen with OS Compatibility	4
2. Connection of USB	5
2.1 Connecting to Computer with USB cable of Touch-screen	5
2.2 Check Touch-screen connection.....	5
2.2.1 Check Digitizer Touch Screen Mode.....	5
2.2.2 Check Mouse Mode.....	6
3. Setting	7
3.1 Setting for touch calibration and Option	7
3.1.1 Setting for multi display and calibration.....	7
3.1.2 Setting for Touch-screen display.....	7
3.1.3 Identify Touchscreen in Multiple Monitors	8
3.1.4 Calibration	9
3.1.5 Pen and Touch Option.....	13
3.1.6 Key board of Tablet PC.....	13
3.1.7 Option of Tablet PC input board.....	14
4 Application for HID support and control	15
4.1 Introduction of Application.....	15
4.2 Application Install	15
4.2.1 Start Install	15
4.2.2 Agreement to use application	16
4.2.3 Start to copy files.....	16
4.2.4 Complete Install.....	17
4.3 Verifying Install	17

4.4 Application Remove	18
4.4.1 Start Remove.....	19
4.4.2 Complete Remove	19
4.5 detailed setting of Application.....	20
4.5.1 Calibration by Manual	20
4.5.2 Automatic Touch-screen Rotation.....	22
4.5.3 Manual Rotation.....	23
4.5.4 Gesture(Flicks).....	27

1. Introduction

The Nexio HID Touch-screen is provides new computing environment. You may simply control all of programs with you finger(touching), HID HL/HS totally support Windows 7 touch functions.

1.1 Touch-screen with OS Compatibility

		Windows XP	Windows Vista Business 이상	Windows 7 Professional 이상
Touch type	HL	Mouse	Digitizer single-touch	Digitizer multi-touch
	HS	Mouse	Mouse	Digitizer multi-touch
	HM	Mouse	Mouse	Mouse
Plug and Play	HL	X	O	O
	HS	O	O	O
	HM	O	O	O
Device driver	HL	O	O	O
	HS	O	O	O
	HM	O	O	O
Nexio application	HL	O	O	O
	HS	O	O	O
	HM	O	O	O
Firmware upgrade	HL	O	O	O
	HS	O	O	O
	HM	O	O	O
Calibrate coordinate	HL	O	O	O
	HS	O	O	O
	HM	O	O	O
Gestures	HL	X	O	O
	HS	X	X	O
	HM	X	X	X
Display rotation	HL	O	O	O
	HS	O	O	O
	HM	O	O	O
Multiple monitors	HL	△(Clone mode only)	O	O
	HS	△(Clone mode only)	△(Clone mode only)	O
	HM	△(Clone mode only)	△(Clone mode only)	△(Clone mode only)

Category : X Not supported △ Partial supported O Supported

2. Connection of USB

2.1 Connecting to Computer with USB cable of Touch-screen

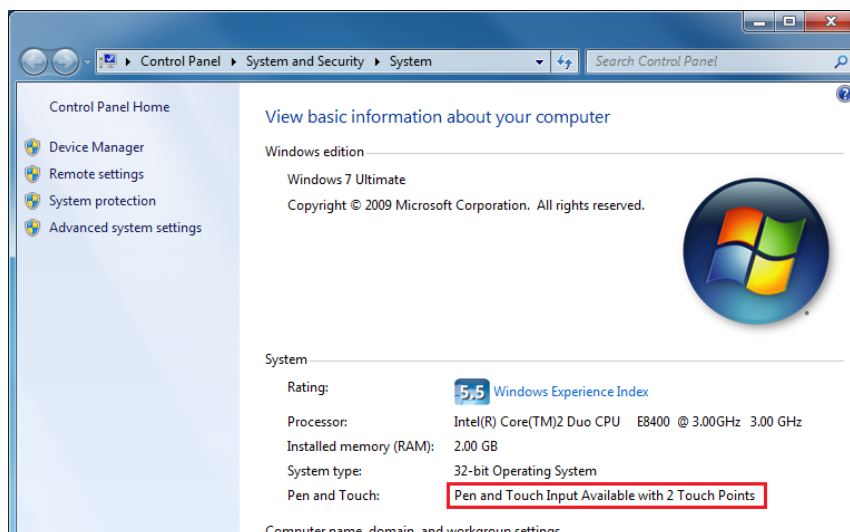
As USB cable is connected to computer, it automatically sensors HID Touch-screen (hereinafter referred to as **Touch-screen**) and shows message as below..



2.2 Check Touch-screen connection

2.2.1 Check Digitizer Touch Screen Mode.

Check message **Pen and Touch Input Available with 2 Touch Points** as below after connecting Touch-screen



Path for execution: Start (window key) → Control panel → system and security → System

2.2.2 Check Mouse Mode

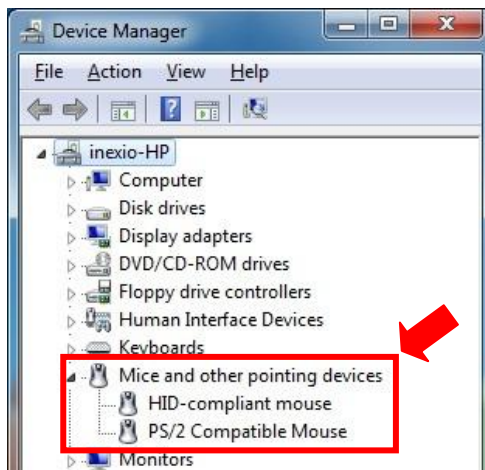
Make sure of HID-compliant mouse added onto Mouse and Other pointing devices in Device Manager.

- Click (+) next to Mouse and Other pointing devices to see subordinate devices.

- + Open Properties of HID-compliant and go to Details to check Hardware IDs

- + It is check if "VID_1870" is involved in Value.

[note] Right Click on HID and other pointing devices > Properties > Details > Hardware ID



Action route : Start → Control Panel → System and Security → System → Device manager

3. Setting

3.1 Setting for touch calibration and Option

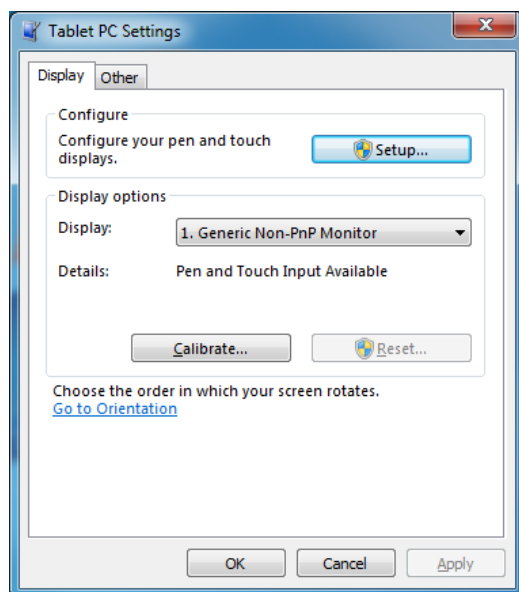
Tablet PC Settings is available only in the mode of Digitizer Touch screen.

[note] Refer to [1.1 touch screen & OS Compatibility] to check the touch type.

3.1.1 Setting for multi display and calibration

You can set for display and calibration to use Touch-screen.

[note] Please, refer to Windows 7's manual for more detail setting.

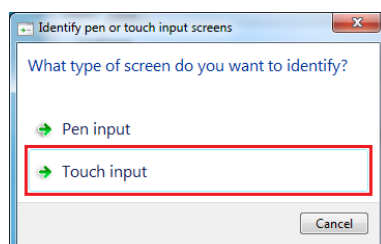


Path for execution: Start(Window Key) → Control panel → Hardware and Sound → Tablet PC setting

3.1.2 Setting for Touch-screen display

When user connect to computer as fist time or use multi monitor, user must set display setting. It begins processing for censoring Touch-screen as selecting touch method.

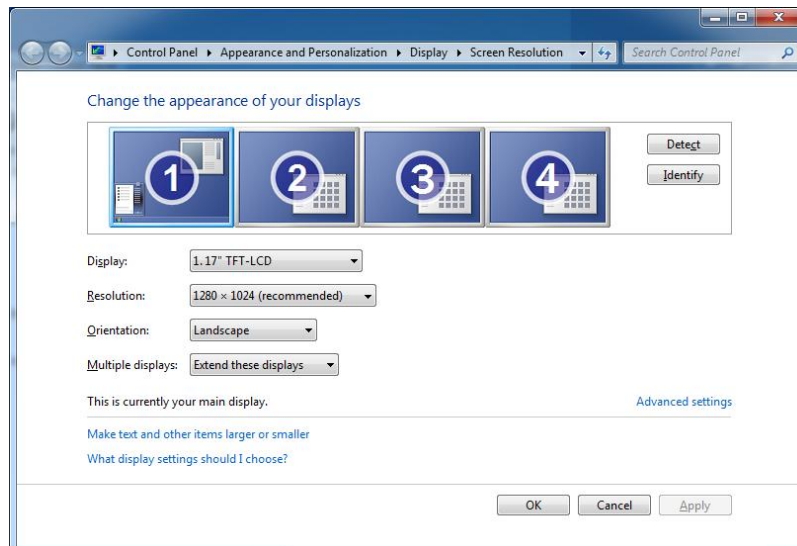
[note] Please, refer to Windows 7's manual for more detail setting.



Path for execution: Start (Window Key) → Control panel → Hardware and Sound → Tablet PC setting
→ Display Tab → Setting

3.1.3 Identify Touchscreen in Multiple Monitors

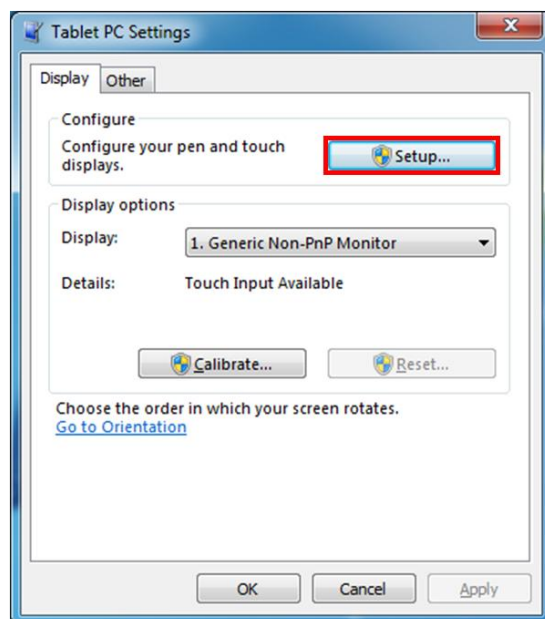
What is Multiple Monitors more than two monitors on one computer. To use **Tablet PC Settings** option for setting Touchscreen in Multiple Monitors. Multi Monitors settings on your computer please refer to the graphic card documentation.



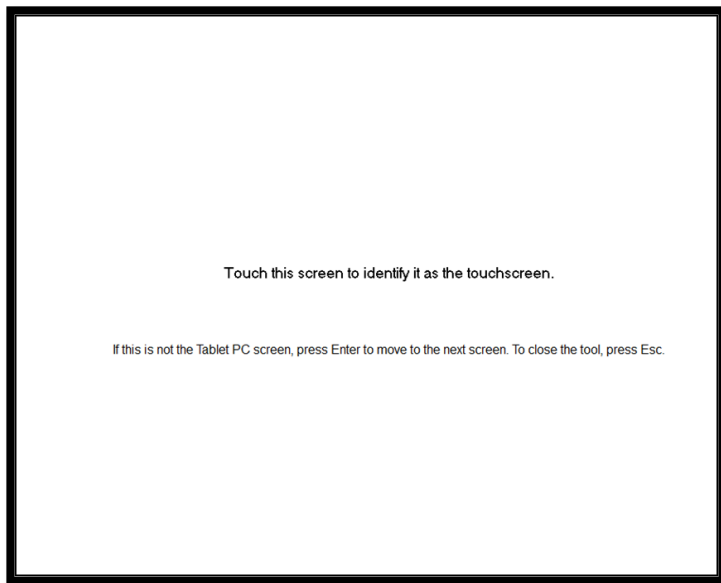
The figure above shows Windows 7's Screen resolution settings, the 4 monitors are connected.

3.1.3.1 Identify Touchscreen

Tablet PC Settings → **Display** tab, select **Setup** button.



To identify display as the Touchscreen by appear as below screen on the display.



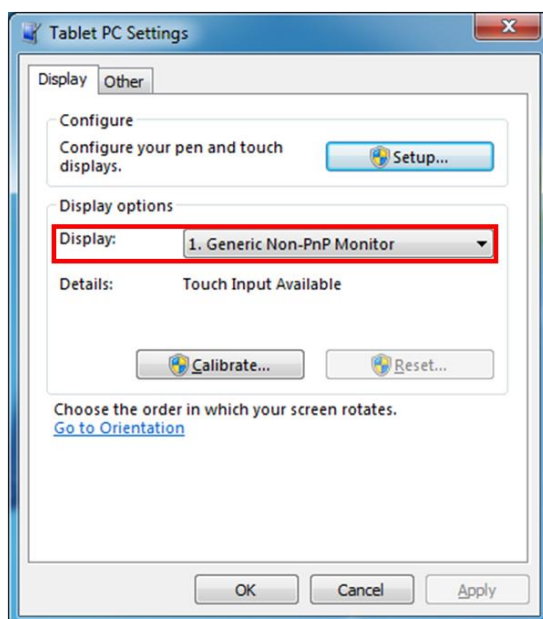
[note] Please, refer to Windows 7's manual for more detail setting.

3.1.4 Calibration

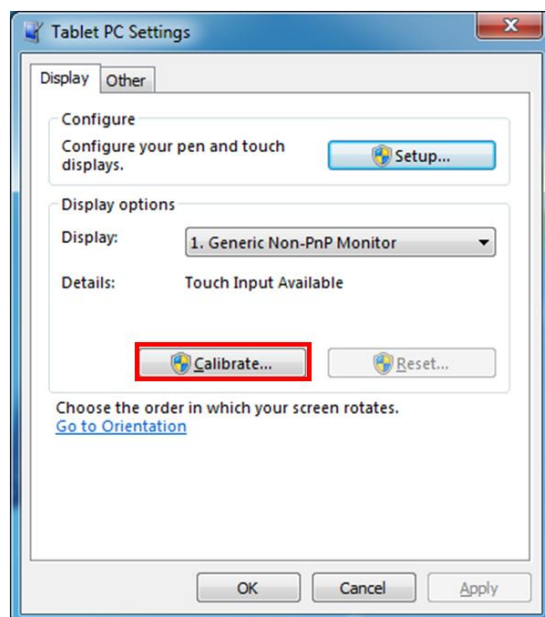
In case of difference touch location and appear point on the display. It can adjust to use Calibrate option.

3.1.4.1 Windows 7 Coordinate Calibration.

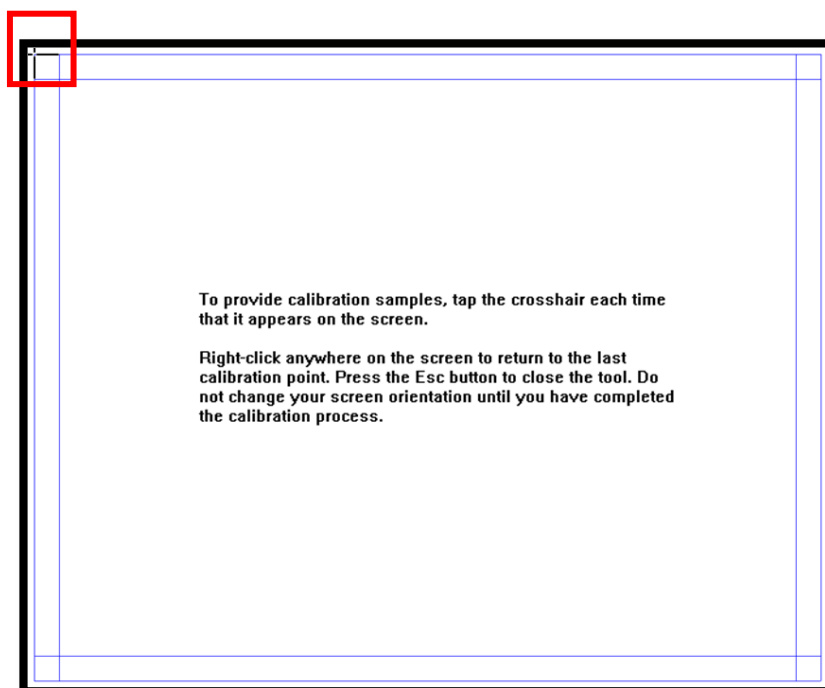
Tablet PC Settings → Display tab → Display options, Select Display for calibrate



Tablet PC Settings → Display tab → Display options, Select **Calibrate** button to start calibration



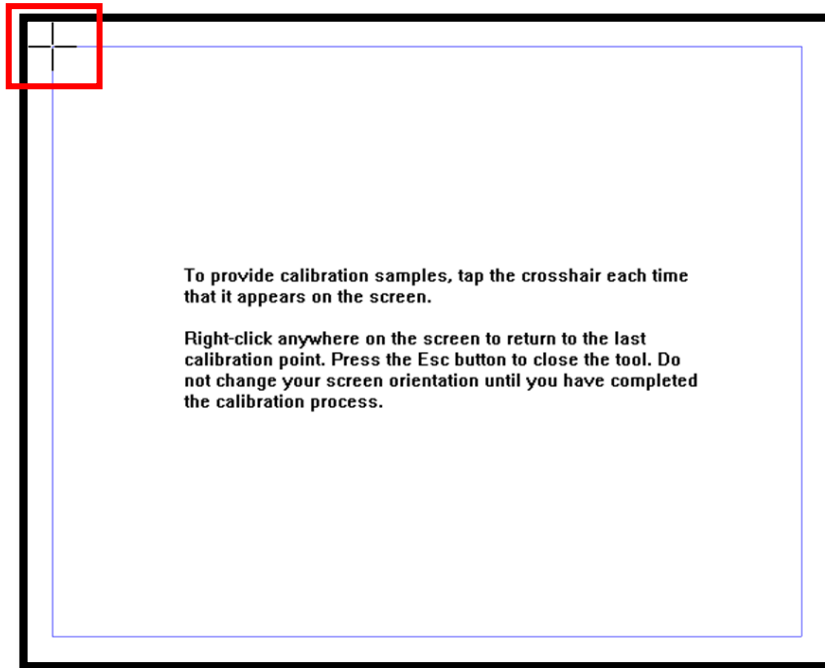
If you calibrate for the first time, it is 16 Point calibration, Tap the crosshair each time that it appears on the screen.



If you calibrate again, it is 4 Point calibration to press "+" on screen

However, the calibration is not able to proceed if the diagonal size is changed from 16:9 to 4:3 which the coordinate would be much out of original touching area, since the 4 Point calibration only can be done by touching "+" area.

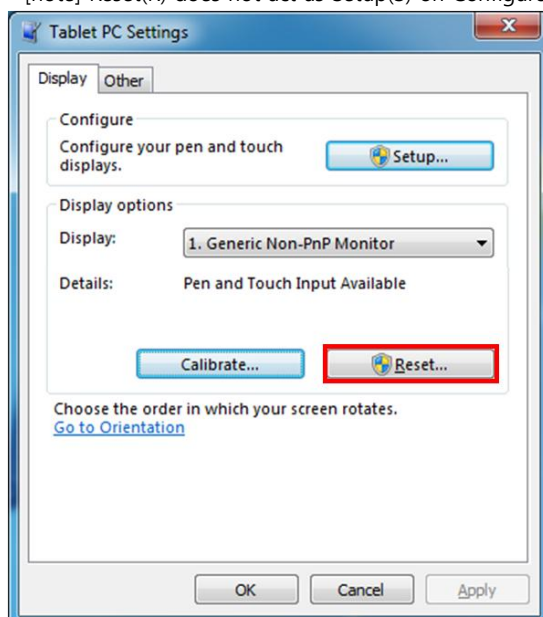
[note] Carry out 16 Point calibration when the coordinate is much incorrect. Reset the coordinate to make it correct if the system is set as 4 Point.



3.1.4.2 Reset Windows 7 Coordinate Calibration.

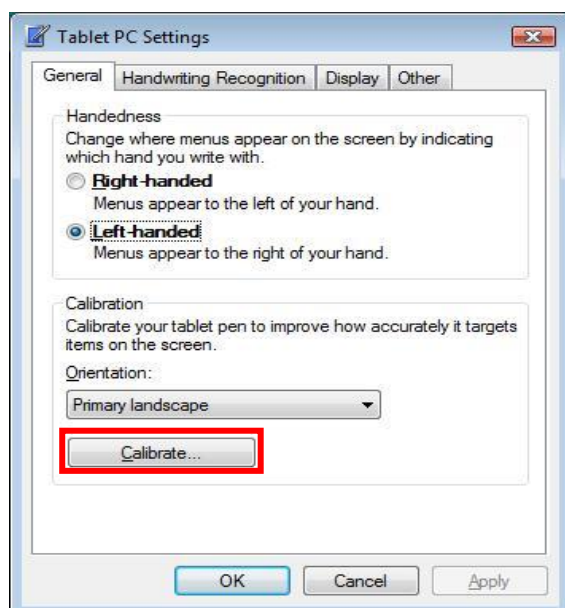
Tablet PC Settings → **Display tab** → **Display Options**, Select **Reset** button to initialize the calibrate values.

[note] Reset(R) does not act as Setup(S) on Configure.



3.1.4.3 Windows Vista Coordinate Calibration

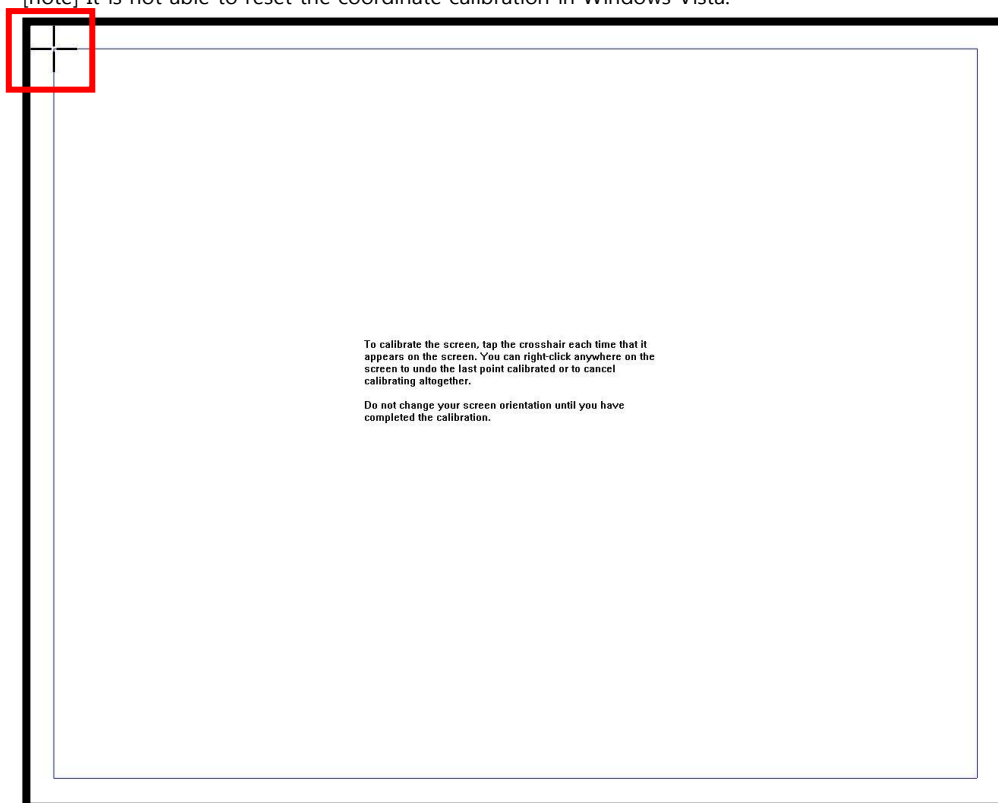
Tablet PC Settings → Select the Calibrate button on General tap to carry out the coordinate calibration.



Select the Calibrate button to start the 4 Point calibration. Press "+" on screen.

However, the calibration is not able to proceed if the diagonal size is changed from 16:9 to 4:3 which the coordinate would be much out of original touching area, since the Vista calibration only can be done by touching "+" area

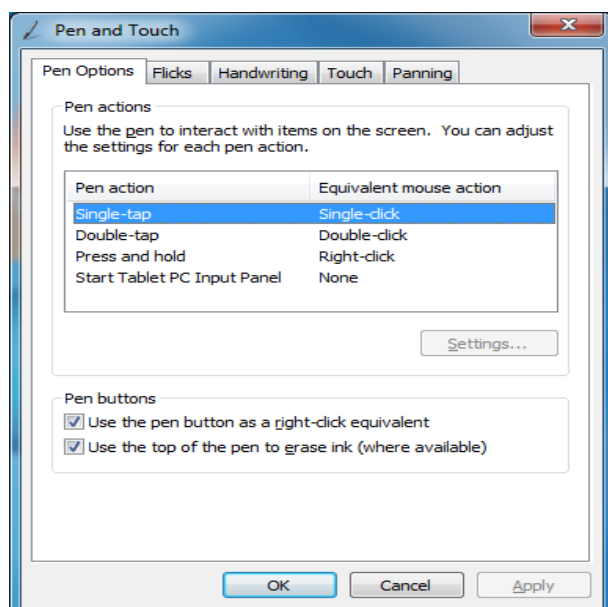
[note] It is not able to reset the coordinate calibration in Windows Vista.



3.1.5 Pen and Touch Option.

User can set pen and touch operation.

[note] Please, refer to Windows 7's manual for more detail setting.



Path for execution: Start (Window Key) → Control Panel → Hardware and Sound → Pen and Touch

3.1.6 Key board of Tablet PC

User can input hand writing. Please refer to manual at upper right corner.

There is Hand writing board and Keyboard switching key button at upper left corner.

[note] user can manipulate size of keyboard. Try resizing as you wish.

[Hand writing board]



[Keyboard]

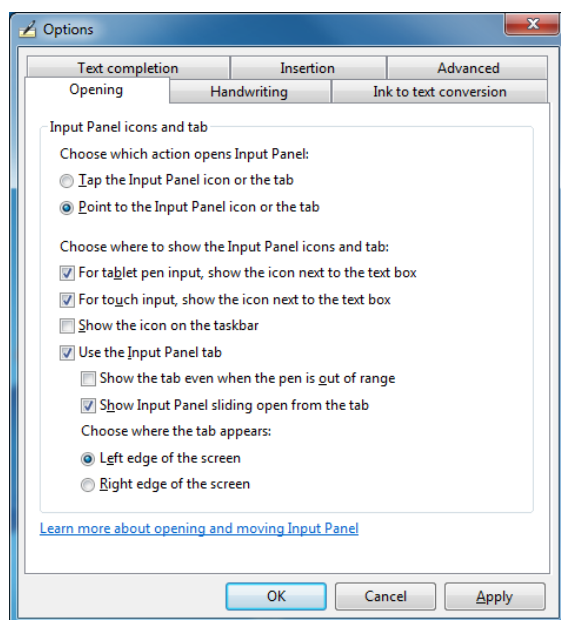


Path for execution: Start (Window Key) → All Programs → Accessories → Tablet PC → Tablet PC Input Panel

3.1.7 Option of Tablet PC input board

User can change setting of Tablet PC input board

[note] Please, refer to Windows 7's manual for more detail setting.



Path for execution: Tablet PC Input Panel → Tools → Option

4 Application for HID support and control

4.1 Introduction of Application

All of OS support Nexio HID without application, but there would be some function limitation due to(or caused by) the lack of the application.

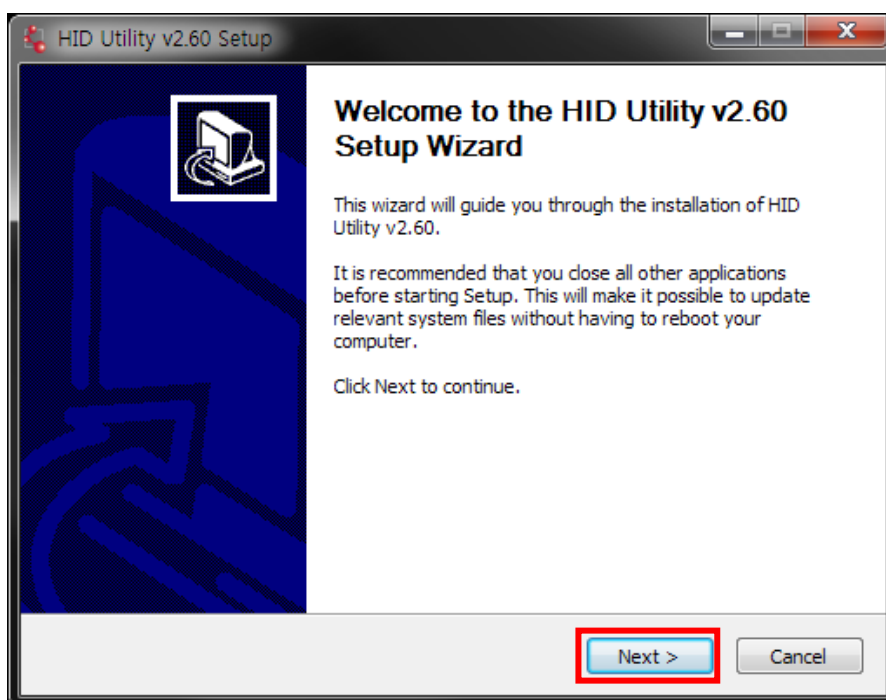
[note] HID HL on Windows XP needs an application to perform.

4.2 Application Install

Proceed with the application installation following to Install Shield Wizard.

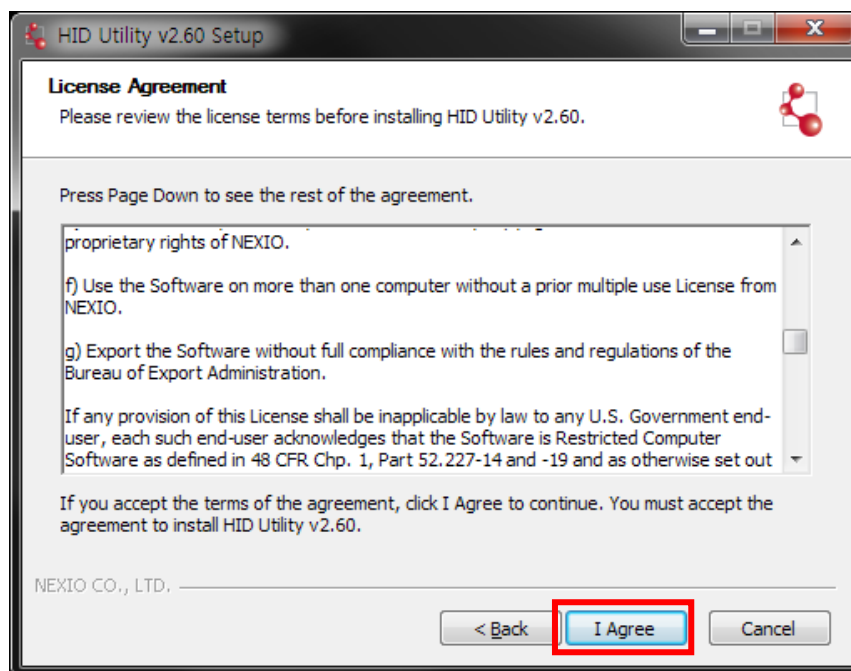
4.2.1 Start Install

Select **Next button** to start installation in InstallShield Wizard window.



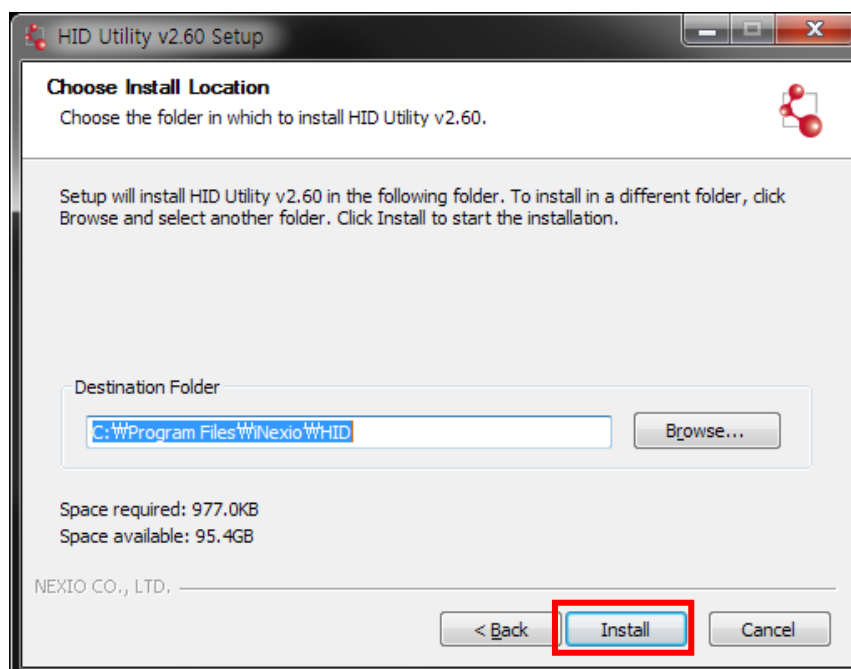
4.2.2 Agreement to use application

Press I Agree to go to the next step of the installation.



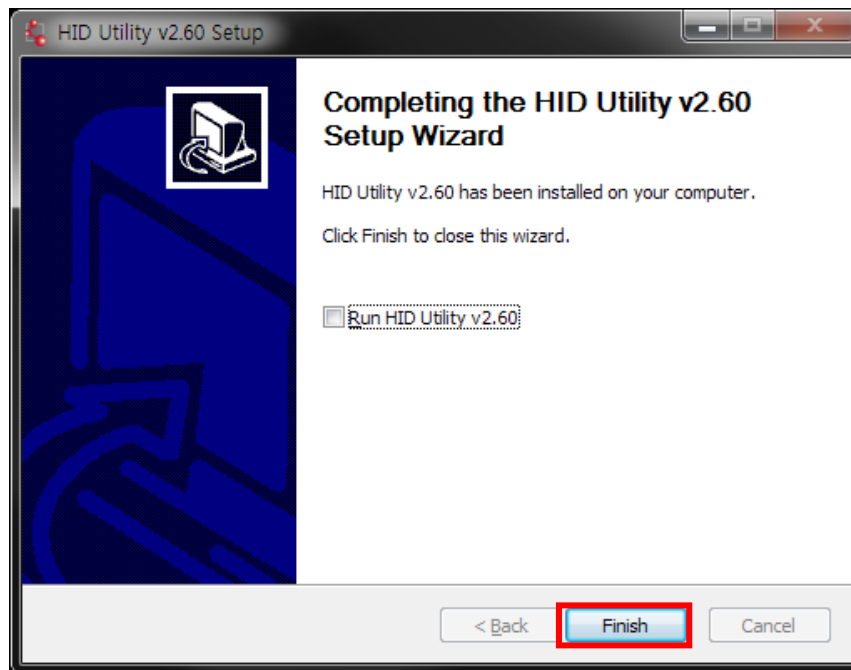
4.2.3 Start to copy files

Select **Install** button to copy.



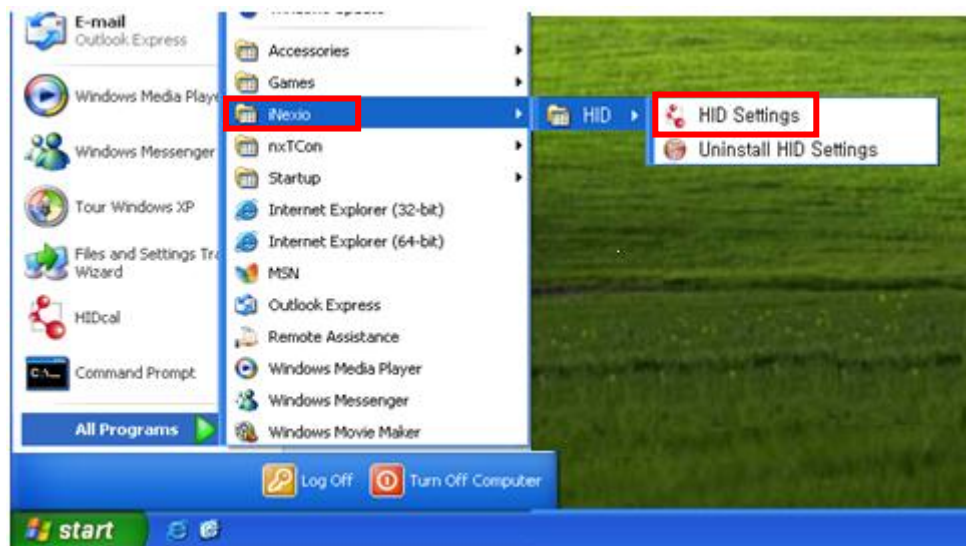
4.2.4 Complete Install

Click **Finish** to complete install.



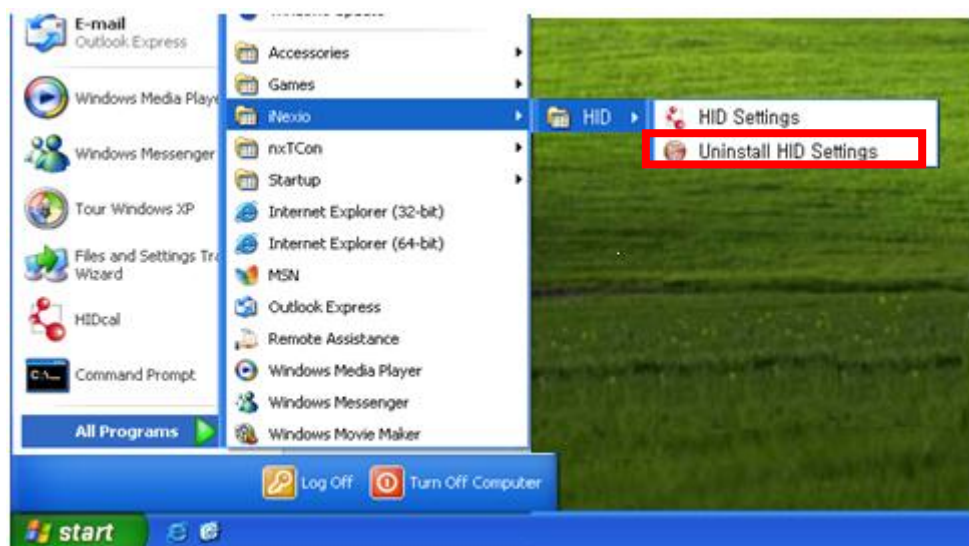
4.3 Verifying Install

iNexio → HID folder will be appeared on Start Menu.

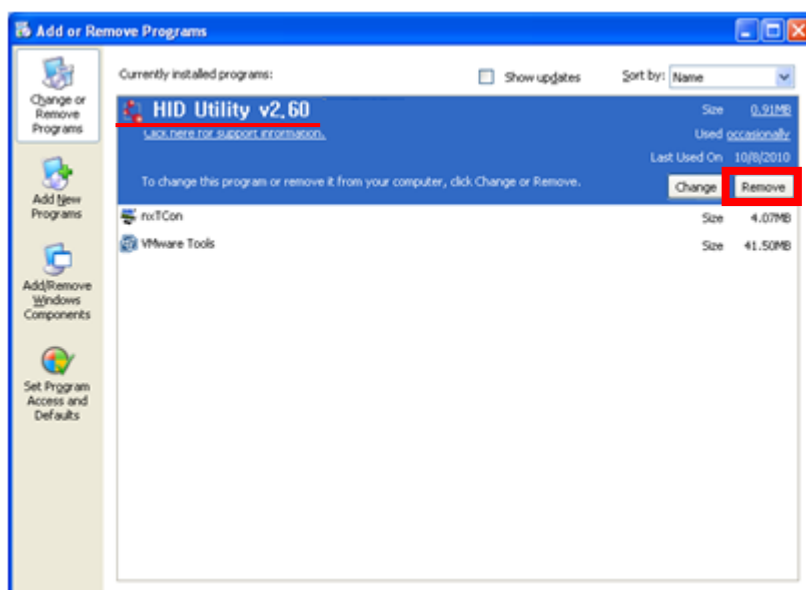


4.4 Application Remove

Click **Uninstall** on **Start Menu** or go to **Add or Remove Programs** of **Control Panel** to remove program. Follow Remove Wizard instruction.



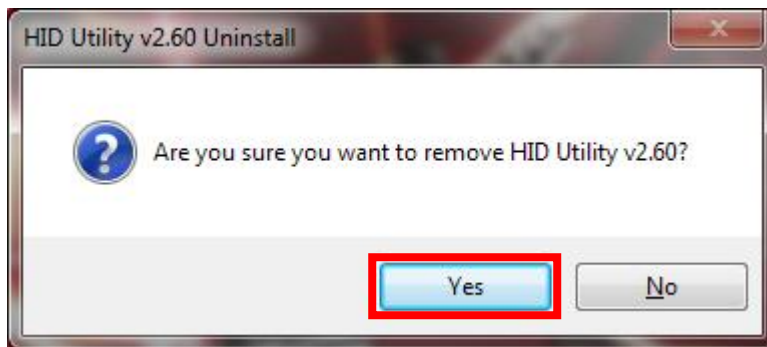
[Uninstall on Start Menu]



[iNexio HID Utility on Add or Remove Programs of Control Panel]

4.4.1 Start Remove

Select Remove Only. Select **[YES]**.



4.4.2 Complete Remove

Click **[OK]**.



4.5 detailed setting of Application

4.5.1 Calibration by Manual

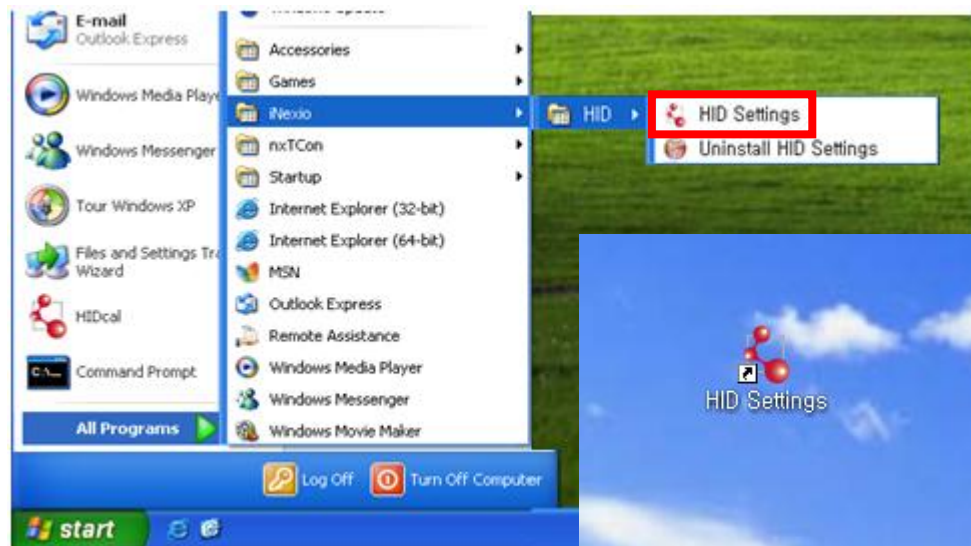
If touching point is not matched to the mouse cursor, carry out the calibration using HID Settings which is a manual calibration program.

[note] It is able to use only in case the touch type is Mouse. Refer to [1.1 touch screen & OS Compatibility] to check the touch type.

4.5.1.1 Execute Calibration Program

You may run HID Settings on iNexio HID in All Programs or run HID Settings Icon on Windows.

Path of Execution: Start (Window key) → All programs → iNexio → HID → Settings

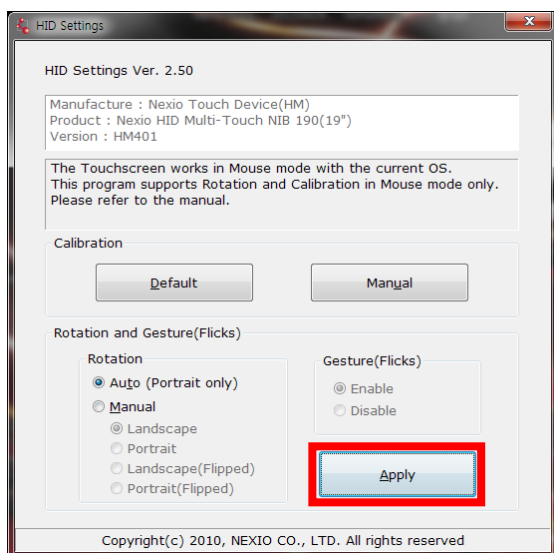


[Calibration Icon on the screen]


4.5.1.2 HID Settings

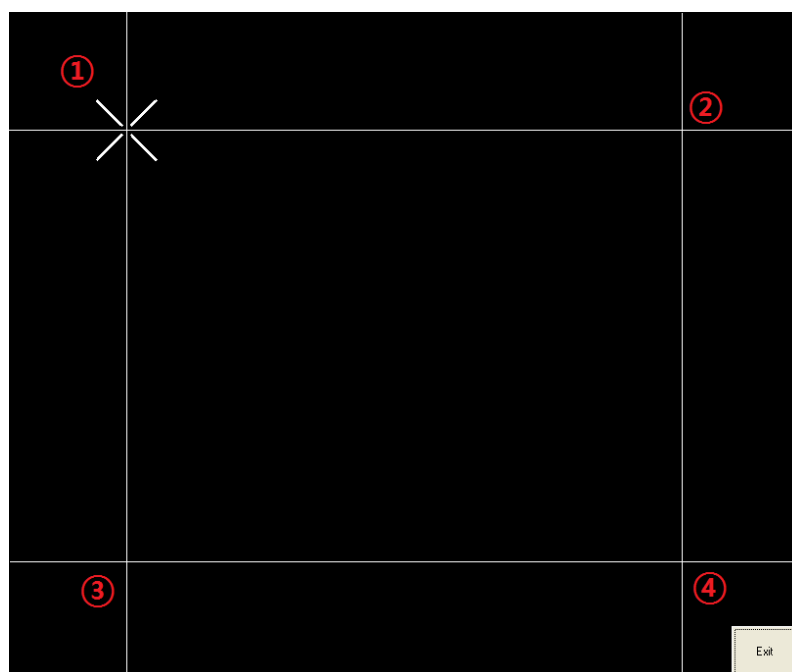
You may see HID Settings as below picture. Select Manual button on Calibration to carry out the coordinate calibration.

You may select [Default] to go back to default value.



4.5.1.3 How to Calibrate

Run Manual Calibration program and correction screen will be appeared as below. Touch your finger to the center of  and repeat as following the number.



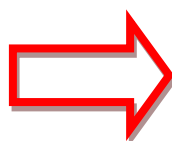
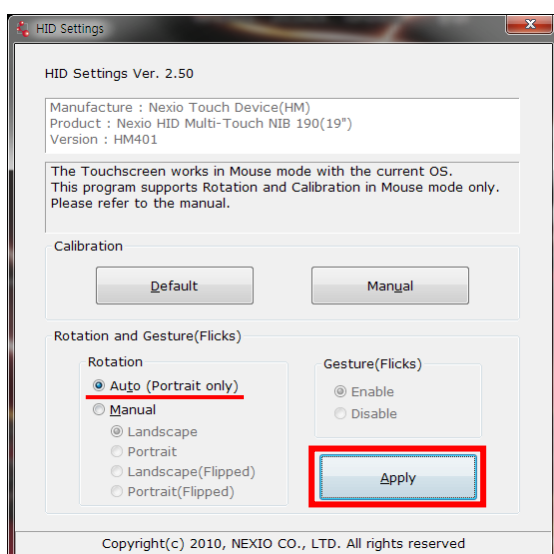
4.5.2 Automatic Touch-screen Rotation

Automatic Touch-screen Rotation carries out the coordinate calibration automatically to use the monitor in vertical.

Run a program, you may see a picture as follows. Select [Auto(Portrait only)] on Rotation, and [Apply]. And the coordinate will be corrected automatically after the monitor is rotated.

Please refer to the graphic card manual on issues related to monitor rotation.

[note] It is able to use only in case the touch type is Mouse. Refer to [1.1 touch screen & OS Compatibility] to check the touch type.



[note] Automatic Touch-screen rotation provides function on the **left 90 degree only**.

4.5.3 Manual Rotation

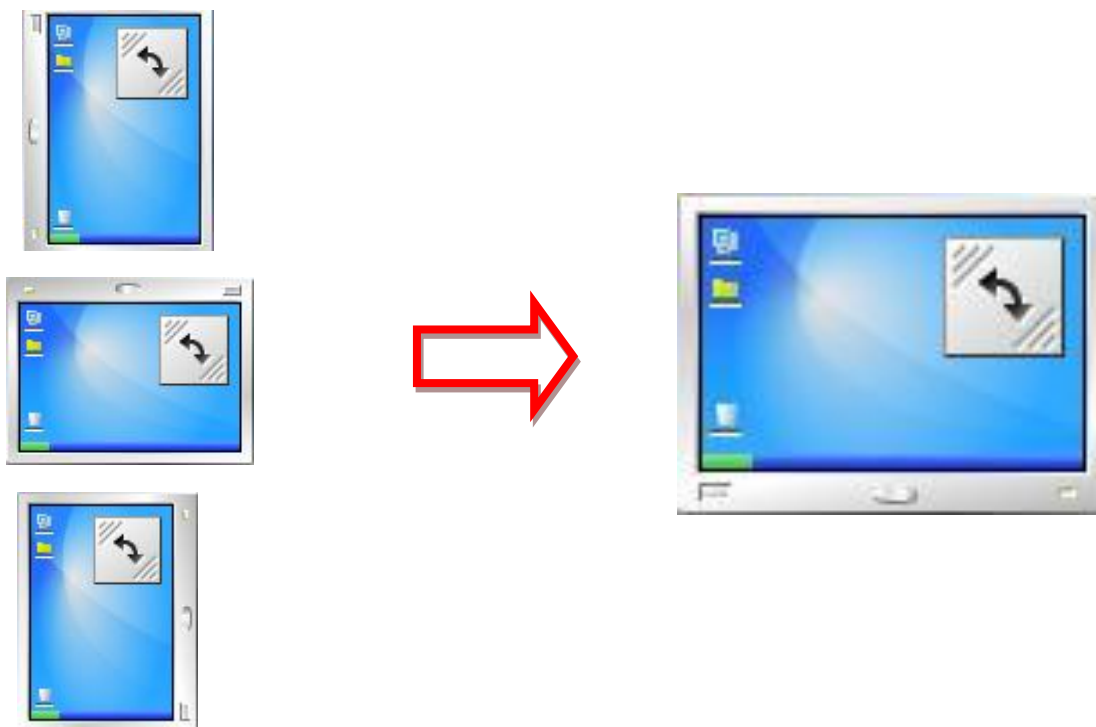
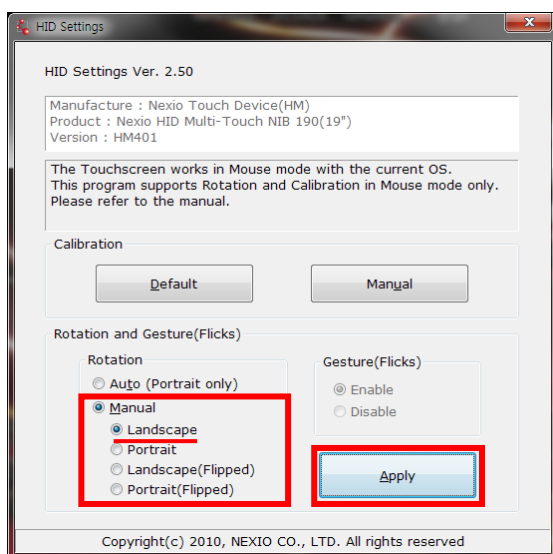
The Manual Rotation is to calibrate the coordinate in manual following to the rotation direction.

[note] It is able to use only in case the touch type is Mouse. Refer to [1.1 touch screen & OS Compatibility] to check the touch type.

4.5.3.1 Landscape

Landscape is the function to returns to the horizontal screen coordinate.

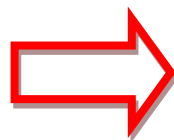
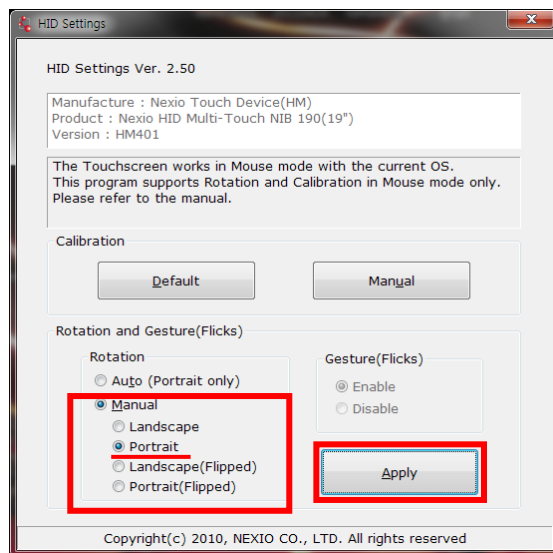
Select [Manual] & [Landscape] on Rotation, and click [Apply].



4.5.3.2 Portrait

Portrait is the function to change the coordinate as the direction of the screen rotated as below picture.

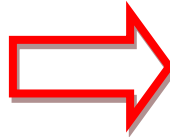
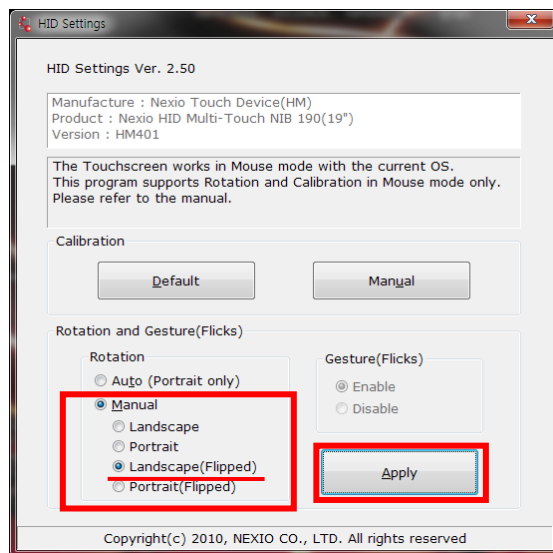
Select [Manual] & [Portrait] on Rotation, and click [Apply].



4.5.3.3 Landscape(Flipped)

Landscape(Flipped) is the function to change the coordinate as the direction of the screen rotated as below picture.

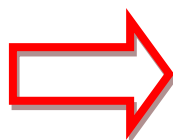
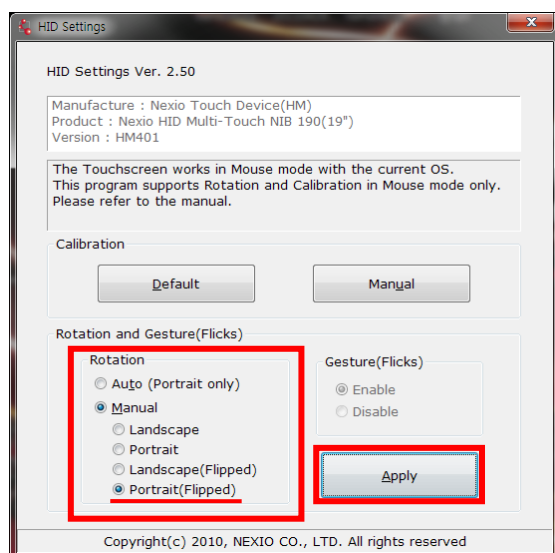
Select [Manual] & [Landscape(Flipped)] on Rotation, and click [Apply].



4.5.3.4 Portrait(Flipped)

Landscape(Flipped) is the function to change the coordinate as the direction of the screen rotated as below picture.

Select [Manual] & [Portrait(Flipped)] on Rotation, and click [Apply].



4.5.4 Gesture(Flicks)

Gesture(Flicks) enable/disable the function of Getsture(Flicks) with easy in Windows Vista & Win7.

[note] It is able to use only in case the touch type is Digitizer. Refer to [1.1 touch screen & OS Compatibility] to check the touch type.

4.5.4.1 Enable/Disable

Run a program, you may see as follows.

Select [Enable] & [Apply] to enable the flick function, and select [Disable] & [Apply] to disable the flick function

